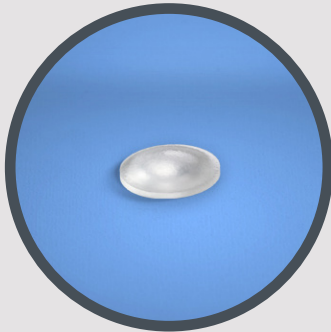
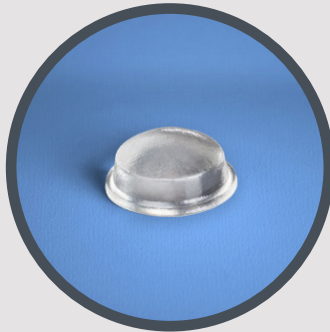


Bumper Sizes

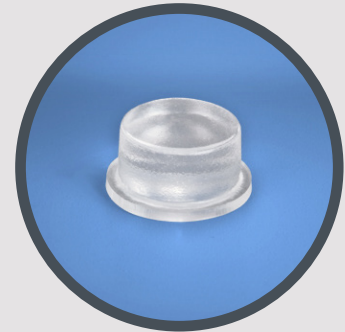
The domed shaped bumpers work best for softening cabinet doors and drawers from slamming, reducing noise, and extending the life of the cabinets.



Small (I-O142)
 DIAMETER .335" (8.5mm)
 HEIGHT .085" (2.2mm)
 Sheet of 75



Medium (I-0030)
 DIAMETER .440" (11.1mm)
 HEIGHT .200" (5.1mm)
 Sheet of 55



Large (I-O410)
 DIAMETER .500" (12.7mm)
 HEIGHT .250" (6.4mm)
 Sheet of 40

BUMPERS TO BE USED BY CABINET CONSTRUCTION AND STYLE

FRAMELESS

STYLE	DOOR	DRAWER FRONT
SHAKER SLAB FUSION	Small Small Small	Small Small Medium

FRAMED

STYLE	DOOR	DRAWER FRONT
SHAKER SLAB FUSION	Medium Medium Medium	Medium Medium Large